

## UK Manufacturing 15-36 TOPSI

Sector turnover of £606.365bn - in the calendar year Dec2023 to Nov2024

Chart 1. Operating sales, £

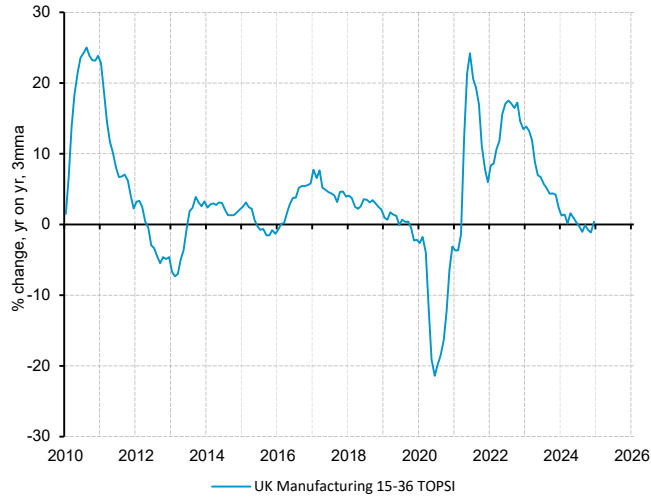
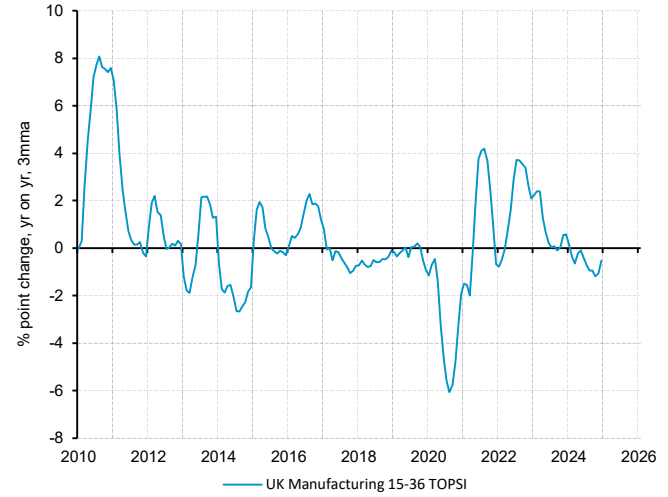


Chart 2. Operating margin



Annual Growth Averages (%) and Inverse Coefficient of variance\* in brackets

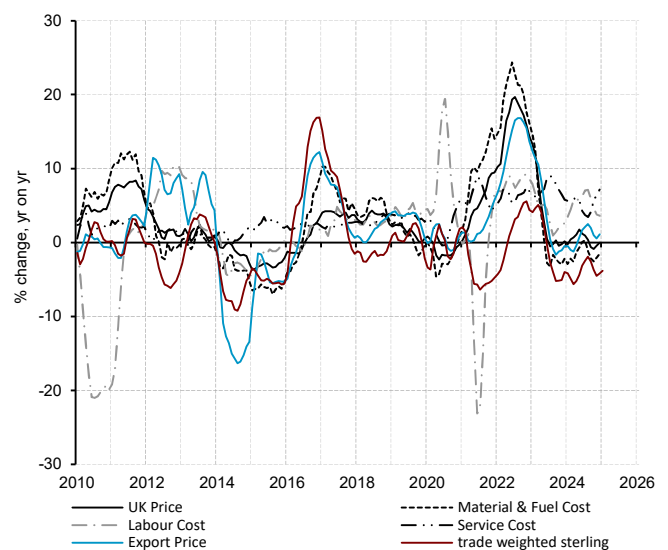
UK Manufacturers 4.1 (0.5)

Chart 3. Price, cost & volume



UK Manufacturers 0.5 (0.2)

Chart 4. Detailed price & cost dynamics



Export Share of Sales 32.3%

Price 2.7 (0.6)  
Cost 2.2 (0.5)  
Volume 1.4 (0.2)

Weights: Material & Fuel cost 51.5%, Labour cost 29.5%, Bought-in cost 7.7%

\* Inverse Coefficient of Variance = Mean / Standard Deviation

## UK based Manufacturers of food 15.1-15.8 TOPSI

Sector turnover of £116.597bn (19.2% of all Manufacturing) - in the calendar year Dec2023 to Nov2024

Chart 1. Operating sales, £

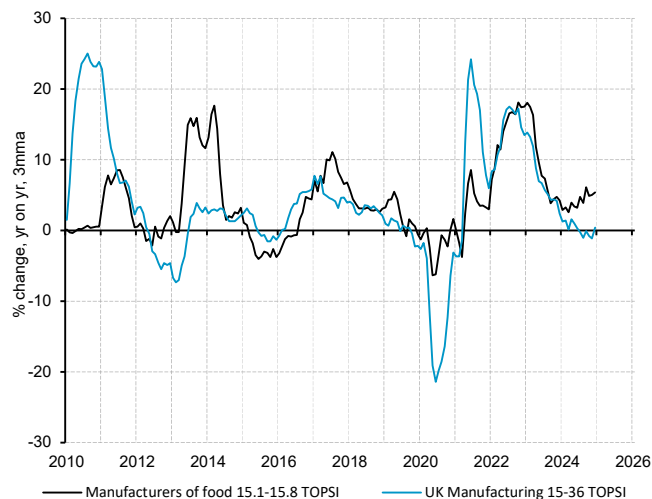
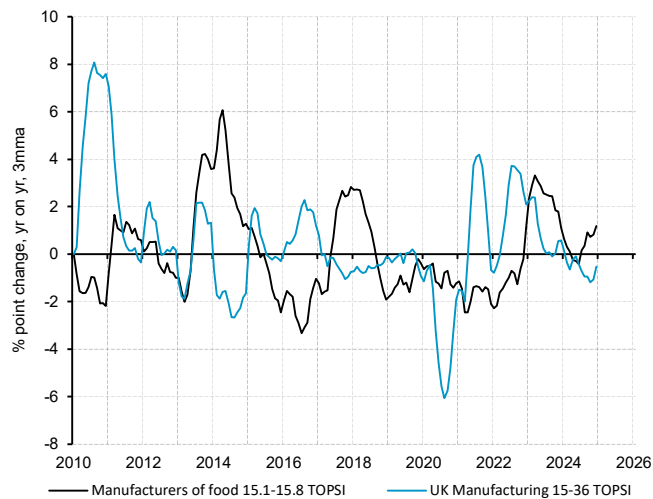


Chart 2. Operating margin



Annual Growth Averages (%) and Inverse Coefficient of variance\* in brackets

Manufacturers of food 4.2 (0.8)  
UK Manufacturers 4.1 (0.5)

Manufacturers of food 0.1 (0.0)  
UK Manufacturers 0.5 (0.2)

Chart 3. Price, cost & volume

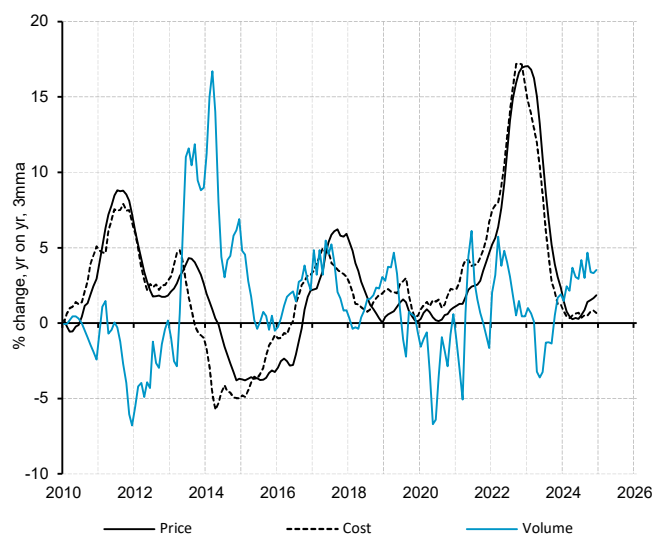
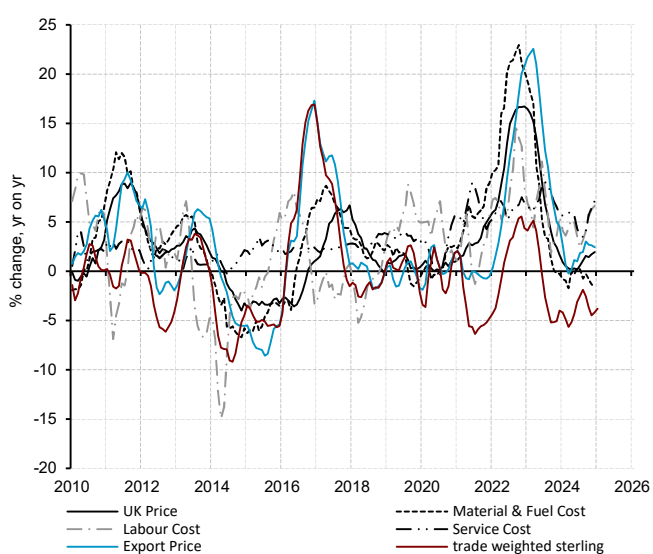


Chart 4. Detailed price & cost dynamics



Export Share of Sales 8.8%

Price 2.8 (0.6)  
Cost 2.7 (0.6)  
Volume 1.4 (0.4)

Weights: Material & Fuel cost 64.2%, Labour cost 19.5%, Bought-in cost 7.0%

\* Inverse Coefficient of Variance = Mean / Standard Deviation

## UK based Meat processors 15.1 TOPSI

Sector turnover of £27.507bn (4.5% of all Manufacturing) - in the calendar year Dec2023 to Nov2024

Chart 1. Operating sales, £

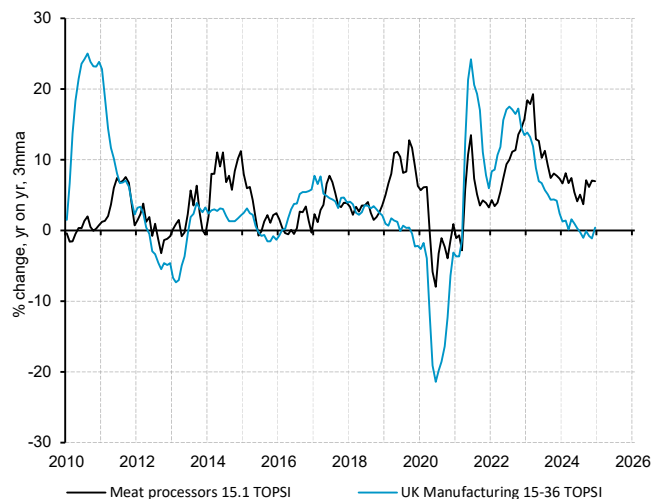
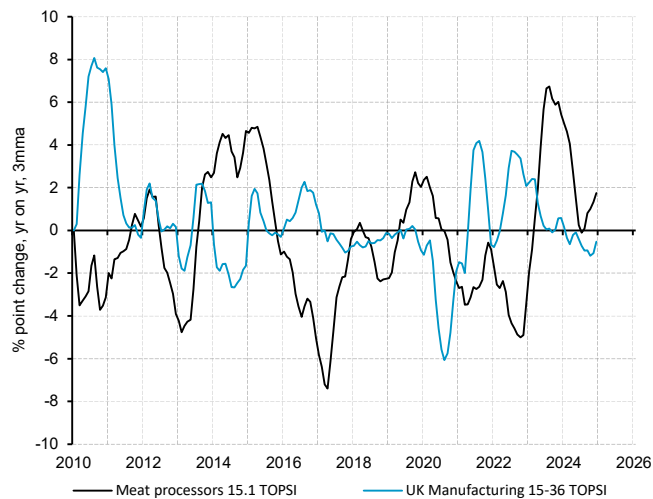


Chart 2. Operating margin



Annual Growth Averages (%) and Inverse Coefficient of variance\* in brackets

Manufacturers of meat & meat products 4.4 (1.0)  
UK Manufacturers 4.1 (0.5)

Manufacturers of meat & meat products -0.4 (-0.1)  
UK Manufacturers 0.5 (0.2)

Chart 3. Price, cost & volume

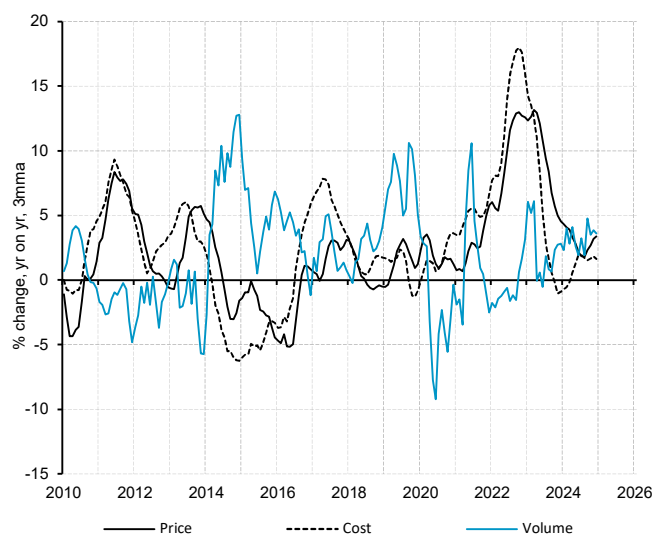
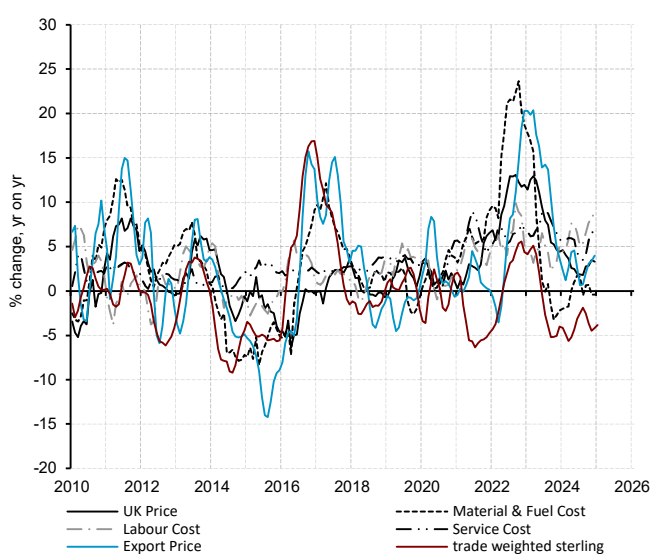


Chart 4. Detailed price & cost dynamics



Export Share of Sales 7.8%

Price 2.4 (0.6)  
Cost 2.8 (0.6)  
Volume 2.0 (0.5)

Weights: Material & Fuel cost 71.7%, Labour cost 17.2%, Bought-in cost 5.7%

\* Inverse Coefficient of Variance = Mean / Standard Deviation

## UK based Processors & freezers of fish, fruits & veg 15.2-3 TOPSI

Sector turnover of £13.898bn (2.3% of all Manufacturing) - in the calendar year Dec2023 to Nov2024

Chart 1. Operating sales, £

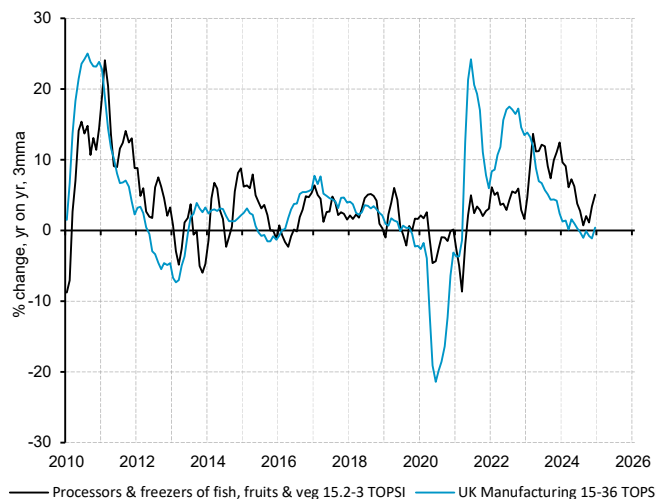
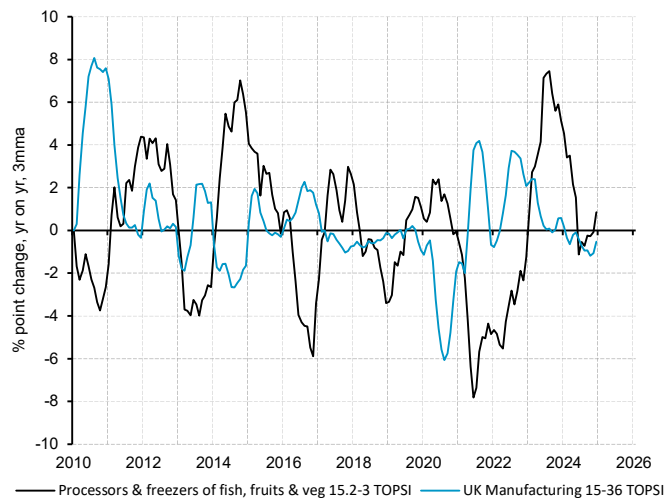


Chart 2. Operating margin



Annual Growth Averages (%) and Inverse Coefficient of variance\* in brackets

Processors & preservers of fish & fish products	4.0 (0.8)
UK Manufacturers	4.1 (0.5)

Processors & preservers of fish & fish products	0.2 (0.1)
UK Manufacturers	0.5 (0.2)

Chart 3. Price, cost & volume

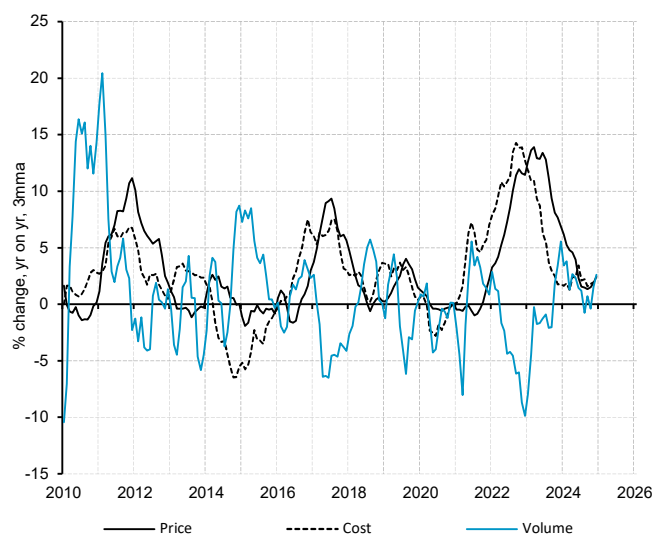
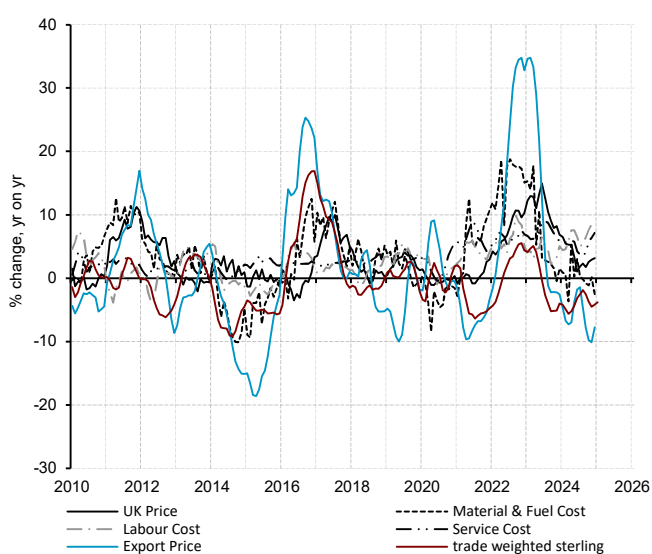


Chart 4. Detailed price & cost dynamics



Export Share of Sales 5.9%

Price	3.0 (0.8)
Cost	2.9 (0.7)
Volume	1.0 (0.2)

Weights: Material & Fuel cost 61.1%, Labour cost 21.1%, Bought-in cost 10.0%

\* Inverse Coefficient of Variance = Mean / Standard Deviation

## UK Dairies, cheese & ice-cream makers 15.5 TOPSI

Sector turnover of £14.688bn (2.4% of all Manufacturing) - in the calendar year Dec2023 to Nov2024

Chart 1. Operating sales, £

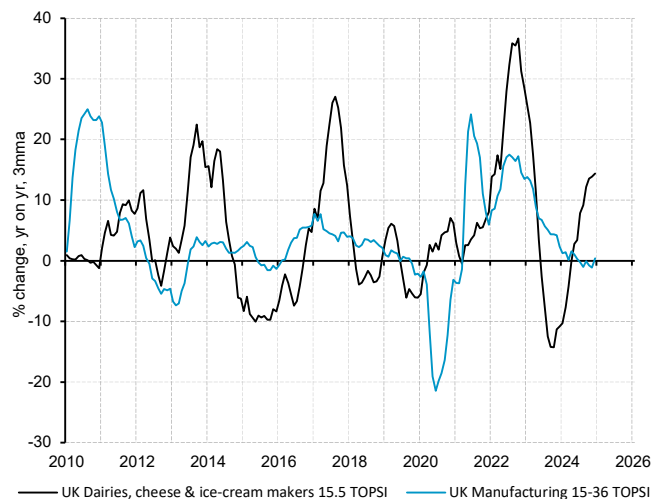
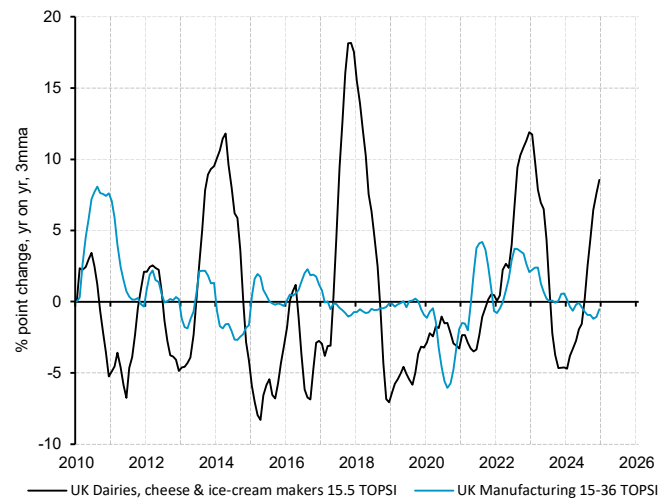


Chart 2. Operating margin



Annual Growth Averages (%) and Inverse Coefficient of variance\* in brackets

UK Dairies, cheese & ice-cream makers 4.7 (0.5)  
UK Manufacturers 4.1 (0.5)

UK Dairies, cheese & ice-cream makers 0.5 (0.1)  
UK Manufacturers 0.5 (0.2)

Chart 3. Price, cost & volume

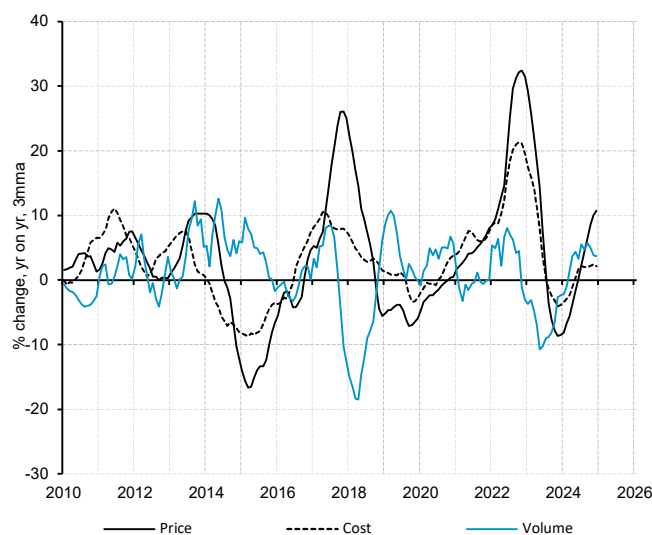
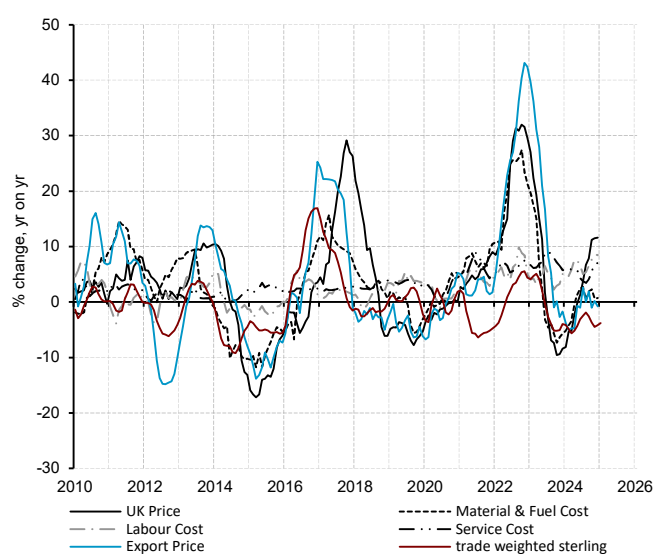


Chart 4. Detailed price & cost dynamics



Export Share of Sales 6.9%

Price 3.6 (0.4)  
Cost 3.2 (0.5)  
Volume 1.1 (0.2)

Weights: Material & Fuel cost 76.6%, Labour cost 12.1%, Bought-in cost 5.8%

\* Inverse Coefficient of Variance = Mean / Standard Deviation

## UK based Grain millers & starch makers (incl. syrups) 15.6 TOPSI

Sector turnover of £6.922bn (1.1% of all Manufacturing) - in the calendar year Dec2023 to Nov2024

Chart 1. Operating sales, £

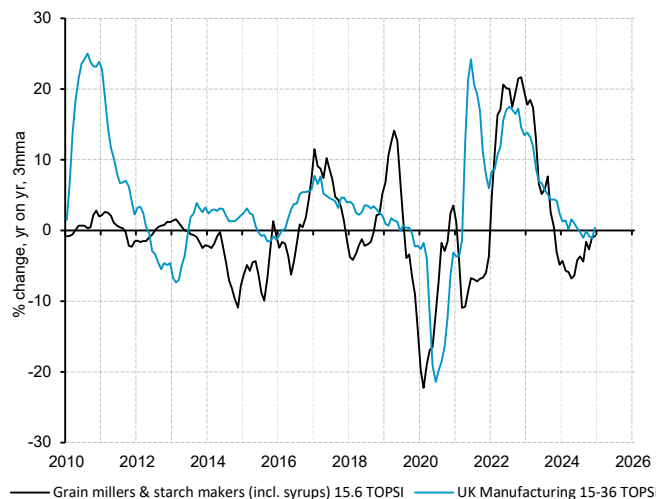
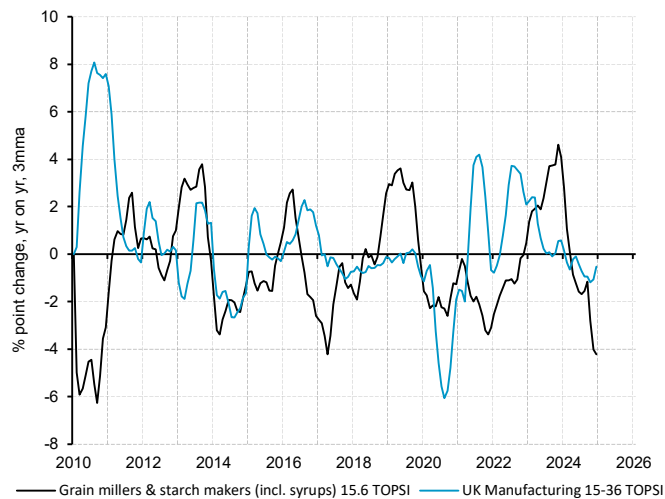


Chart 2. Operating margin



Annual Growth Averages (%) and Inverse Coefficient of variance\* in brackets

Grain millers & starch makers (incl. syrups)	0.2 (0.0)
UK Manufacturers	4.1 (0.5)

Grain millers & starch makers (incl. syrups)	-0.5 (-0.2)
UK Manufacturers	0.5 (0.2)

Chart 3. Price, cost & volume

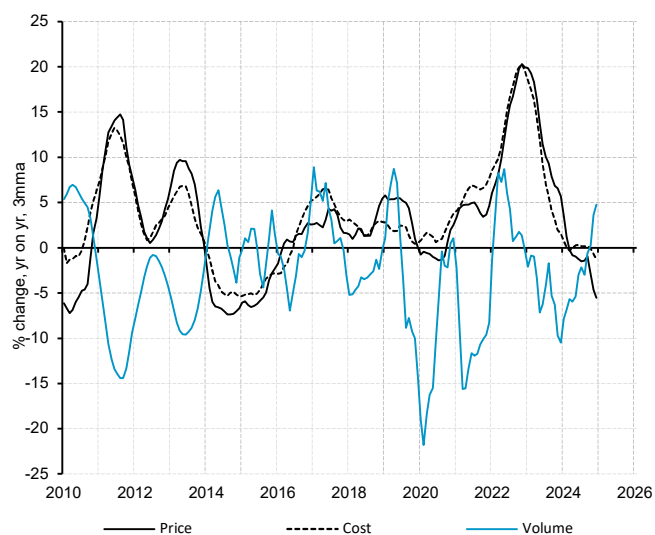
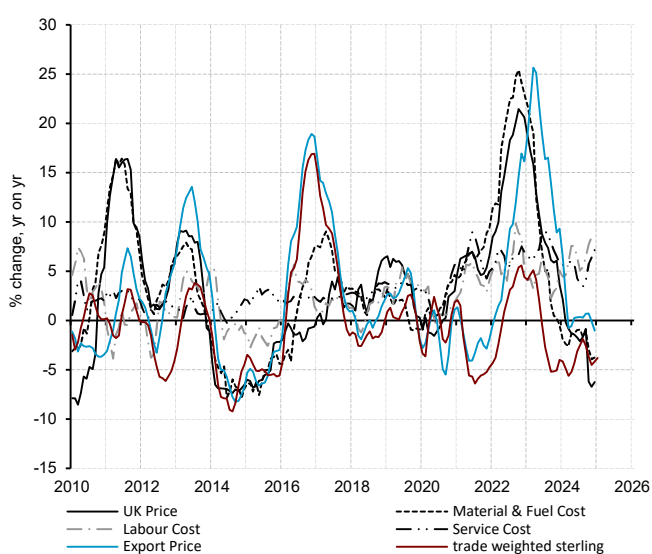


Chart 4. Detailed price & cost dynamics



Export Share of Sales 17.6%

Price	3.0 (0.5)
Cost	3.5 (0.6)
Volume	-2.8 (-0.5)

Weights: Material & Fuel cost 75.9%, Labour cost 11.6%, Bought-in cost 8.3%

\* Inverse Coefficient of Variance = Mean / Standard Deviation

## UK based Bakers, sugar refiners & producers of ambients 15.81-89 TOPSI

Sector turnover of £57.591bn (9.5% of all Manufacturing) - in the calendar year Dec2023 to Nov2024

Chart 1. Operating sales, £

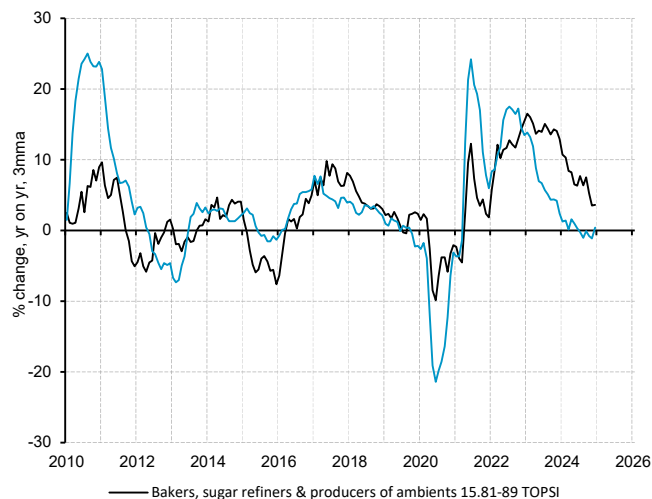
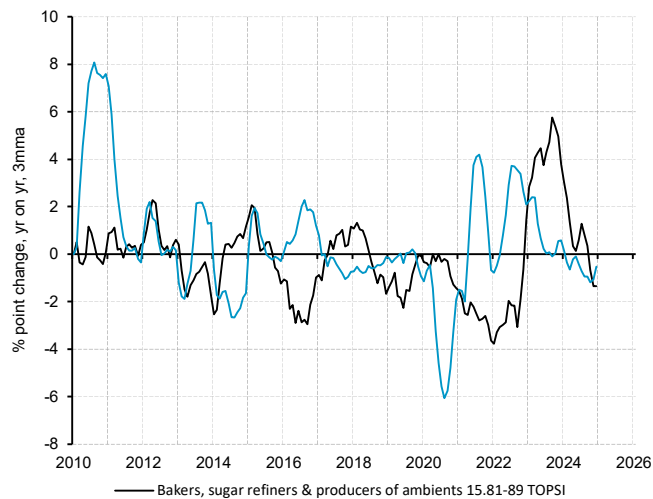


Chart 2. Operating margin



Annual Growth Averages (%) and Inverse Coefficient of variance\* in brackets

Bakers, sugar refiners & producers of ambients	3.4 (0.6)
UK Manufacturers	4.1 (0.5)

Bakers, sugar refiners & producers of ambients	-0.2 (-0.1)
UK Manufacturers	0.5 (0.2)

Chart 3. Price, cost & volume

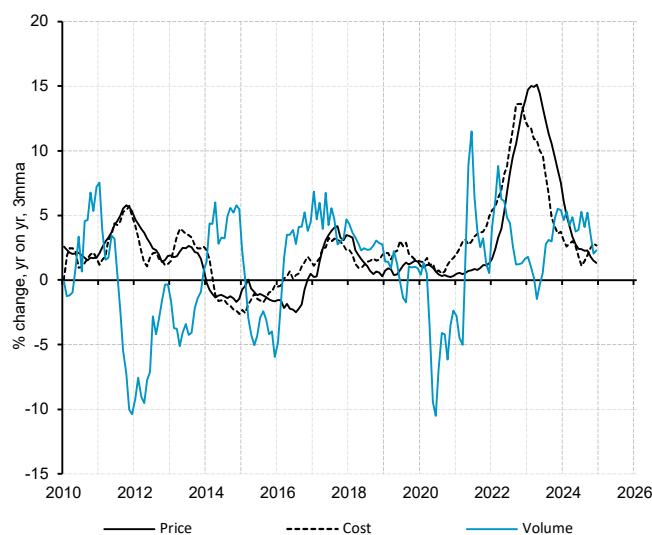
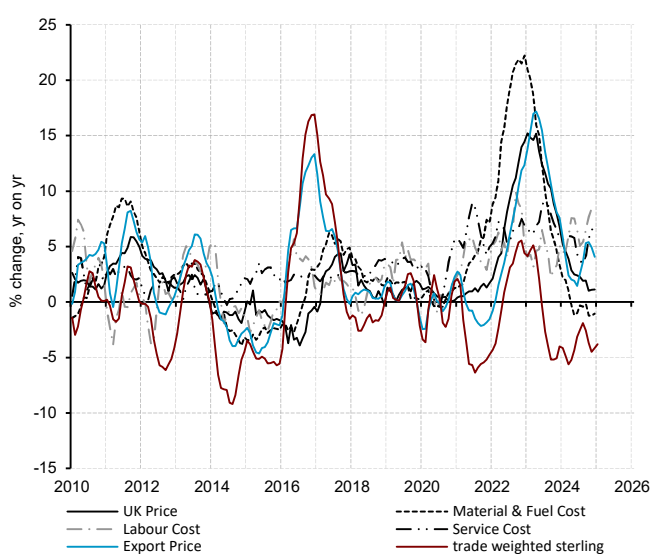


Chart 4. Detailed price & cost dynamics



Export Share of Sales 8.4%

Price	2.5 (0.7)
Cost	2.6 (0.8)
Volume	0.9 (0.2)

Weights: Material & Fuel cost 47.5%, Labour cost 37.0%, Bought-in cost 4.9%

\* Inverse Coefficient of Variance = Mean / Standard Deviation

## UK based Bakers & producers of farinaceous goods 15.81-82 TOPSI

Sector turnover of £14.622bn (2.4% of all Manufacturing) - in the calendar year Dec2023 to Nov2024

Chart 1. Operating sales, £

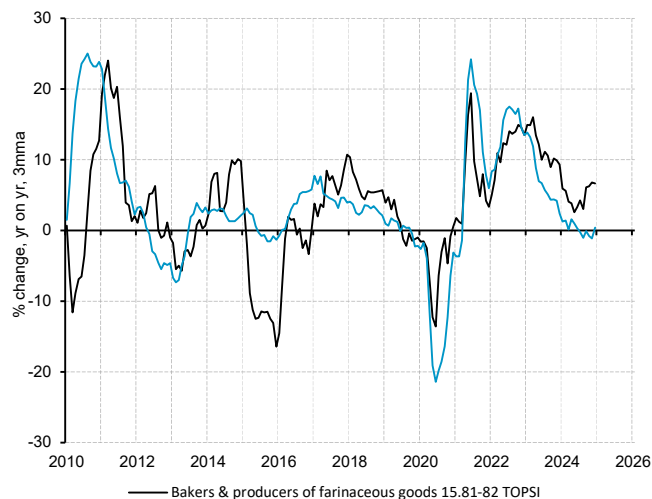
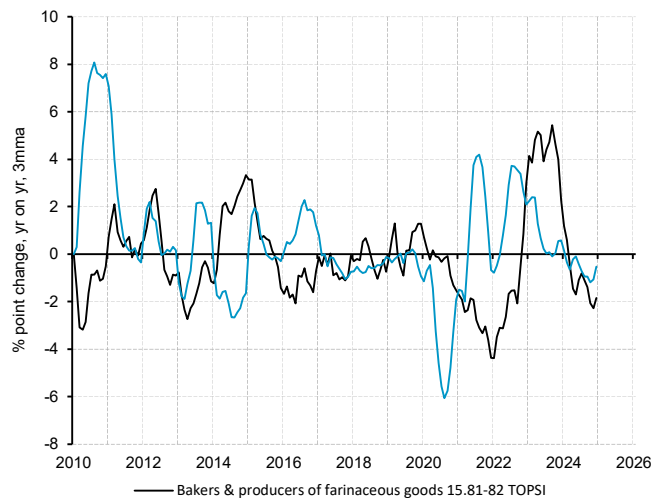


Chart 2. Operating margin



Annual Growth Averages (%) and Inverse Coefficient of variance\* in brackets

Bakers & producers of farinaceous goods	3.5 (0.5)
UK Manufacturers	4.1 (0.5)

Bakers & producers of farinaceous goods	-0.1 (-0.1)
UK Manufacturers	0.5 (0.2)

Chart 3. Price, cost & volume

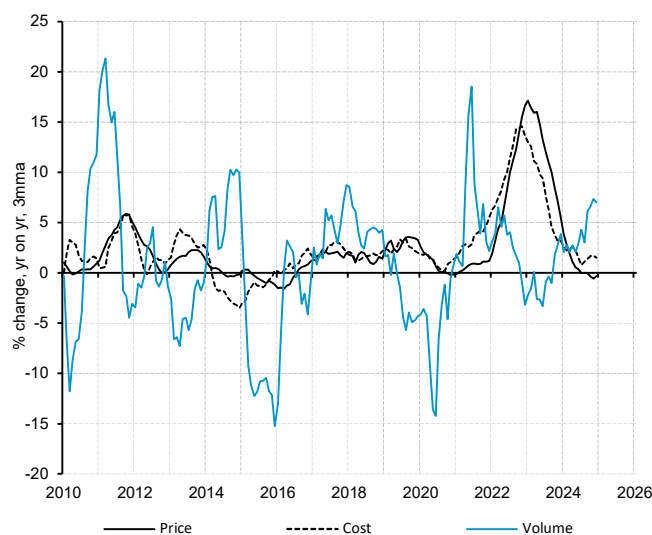
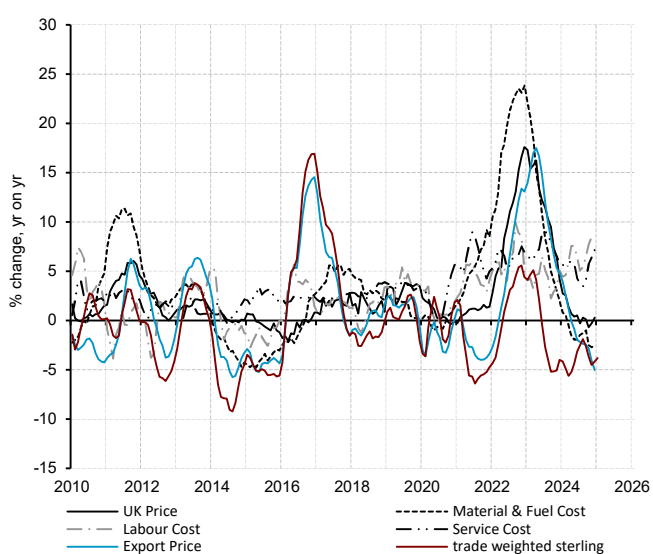


Chart 4. Detailed price & cost dynamics



Export Share of Sales 5.2%

Price	2.5 (0.6)
Cost	2.6 (0.8)
Volume	1.0 (0.2)

Weights: Material & Fuel cost 47.5%, Labour cost 37.0%, Bought-in cost 4.9%

\* Inverse Coefficient of Variance = Mean / Standard Deviation



## UK based Producers of sugar, biscuits & other ambient foods 15.83-89 TOPSI

Sector turnover of £40.968bn (6.8% of all Manufacturing) - in the calendar year Dec2023 to Nov2024

Chart 1. Operating sales, £

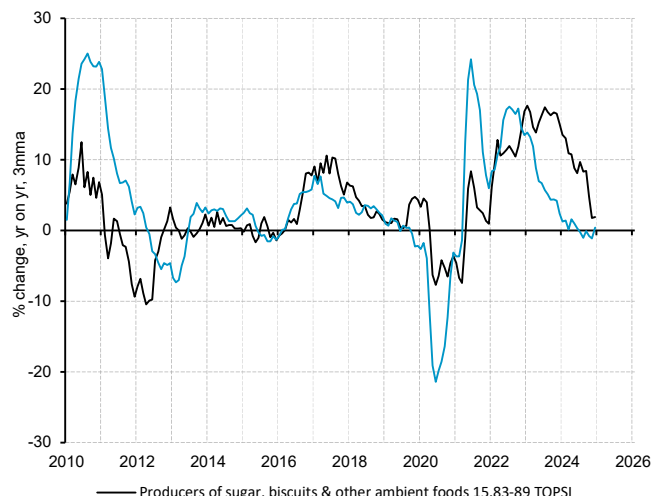
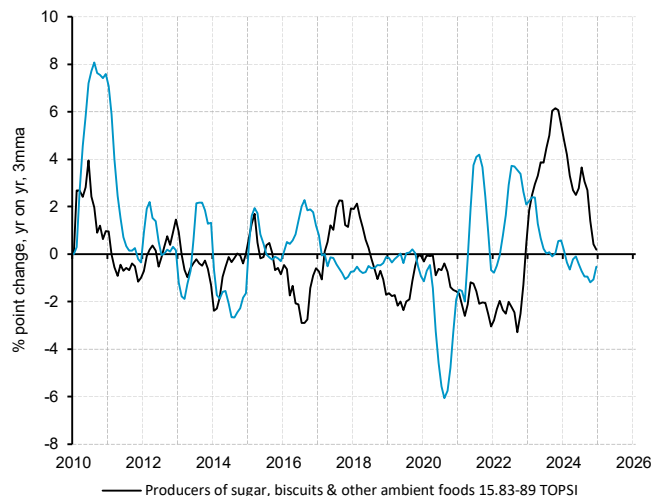


Chart 2. Operating margin



Annual Growth Averages (%) and Inverse Coefficient of variance\* in brackets

Producers of sugar, biscuits & other ambient foods	3.5 (0.6)
UK Manufacturers	4.1 (0.5)

Producers of sugar, biscuits & other ambient foods	0.1 (0.0)
UK Manufacturers	0.5 (0.2)

Chart 3. Price, cost & volume

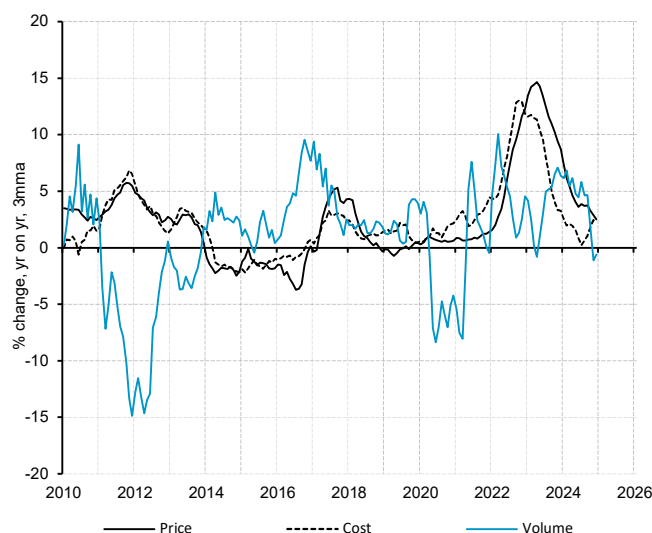
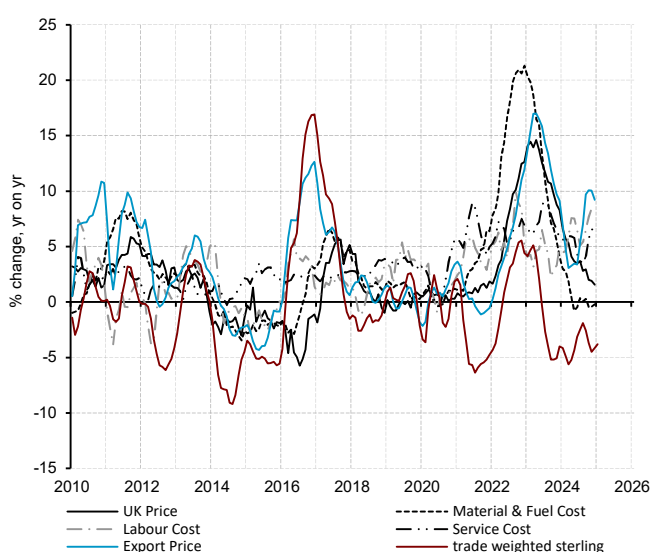


Chart 4. Detailed price & cost dynamics



Export Share of Sales 10.2%

Price	2.5 (0.6)
Cost	2.4 (0.8)
Volume	1.0 (0.2)

Weights: Material & Fuel cost 52.7%, Labour cost 22.1%, Bought-in cost 7.5%

\* Inverse Coefficient of Variance = Mean / Standard Deviation